

# HERMETIC™ Flake

## Color Chart



Dove  
EEO-131



Latte  
EEA-044



Sandstone  
EEN-127



Desert Stone  
EEE-446



Sahara  
EAA-211



Driftwood  
EDR-216



Sedona  
EAE-076



Hazy Blue  
EUA-335



Orca  
EAR-287



Gibraltar  
ERI-119



Battleship  
EIA-019



Slate  
EEL-163



Pebble  
ELE-234



Calico  
EOA-339



Twilight  
EHI-291



Abyss  
ESA-155

**Note:** The colors on this chart are represented as closely as possible. Variations should be expected due to differences in; substrate condition thickness of application, speed of curing, blending of colors, application method and color of initial primer coat. For additional information, see all related Product Information and Technical Data sheets located at [elitecrete.com](http://elitecrete.com).

**elite crete systems**

ENGINEERED HIGH PERFORMANCE SURFACES & FLOORING



## HERMETIC™ Flake Flooring Systems

are durable, seamless, chemical resistant floor providing adjustable levels of slight texture and color to match any design theme or surroundings.

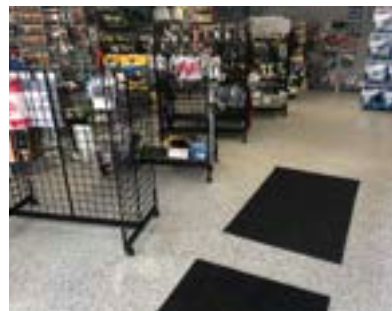
### TYPICAL AREAS OF USE

- Public areas
- Grocery stores
- Airports
- Showrooms
- Retail
- Theme parks
- Hospitality
- Hospitals
- Educational
- Automobile showrooms

### ADVANTAGES

- Ease of maintenance
- Aesthetic improvements
- Hygienic seamless finish
- Hard and abrasion resistant
- VOC free - CA 01350 air quality compliant
- Stain and chemical resistant
- Antimicrobial
- Satin or gloss finish
- Fast set available for quicker turnaround time
- Satin or gloss finish
- Fast set available for quicker turnaround time
- Special colors can match design or preferred colors

For additional information, visit: [elitecrete.com](http://elitecrete.com)



### Elite Crete Systems, Inc.

1151 Transport Drive  
Valparaiso, Indiana 46383

Phone: +1.219.465.7671  
Toll Free: 888-323-4445  
Email: [info@elitecrete.com](mailto:info@elitecrete.com)  
[elitecrete.com](http://elitecrete.com)

The information herein is general information to assist our customers in determining whether our products are suitable for their specific applications. Our products are intended for sale to commercial and industrial customers. We require that customers should inspect and test our products before use to satisfy themselves as to the content and suitability for the applications they intend to use our products for. Nothing herein shall constitute any warranty expressed or implied, including any warranty of merchantability or fitness for a particular purpose, nor is replacement of our materials and in no event shall we be liable for incidental or consequential damages.